

## Color coding

**text** = 360's flagging for manufacturer

= Variation adopted by manufacturer

= Literal adoption by manufacturer

## original manual

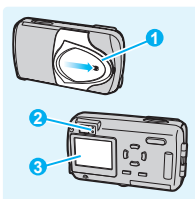
000e\_kihonhen.book Page 18 Wednesday, July 16, 2003 4:39 PM

### Before turning the camera on Loading the battery

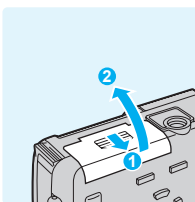
This camera uses an Olympus lithium ion battery (LI-10B).

#### 1 Make sure that

- ① The lens cover is closed.
- ② The lamps on the right of the viewfinder are off.
- ③ The monitor is off.



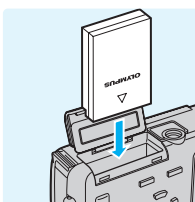
#### 2 Open the battery compartment cover as indicated by the arrows ① ②.



#### 3 Face the battery the correct way and insert it into the camera as shown.

##### Tips

- If the battery is not correctly oriented, the battery compartment cover will not close.



18

## 360's suggested revisions

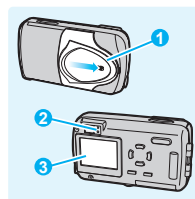
000e\_kihonhen.book Page 18 Wednesday, July 16, 2003 4:39 PM

### Before turning the camera on Loading the battery

This camera uses an Olympus lithium ion battery (LI-10B).

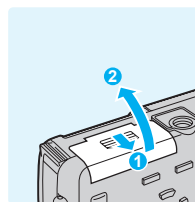
#### 1 Make sure that

- ① The lens cover is closed.
- ② The lamps on the right of the viewfinder are off.
- ③ The monitor is off.



#### 2 Open the battery compartment cover as indicated by the arrows: ① Slide cover out, ② lift up.

**REVISED Text**

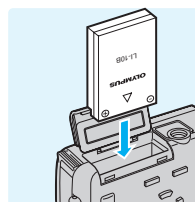


#### 3 Insert the battery into the bottom of the camera as shown.

##### Caution

- Cover will not close if battery is not correctly oriented.

**REVISED Text, Diagram, & Icon**  
Diagram assumes the addition of + and - markings to the casing front.



18

## MANUFACTURER revised manual

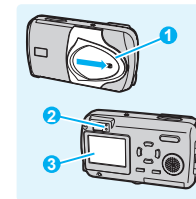
000e\_kihonhen.book Page 15 Tuesday, February 10, 2004 2:30 PM

### Loading and removing the battery

This camera uses an Olympus lithium ion battery (LI-10B).

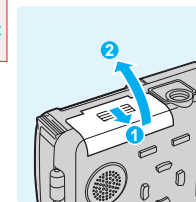
Check the following items before loading or removing the battery:

- ① The lens barrier is closed.
- ② The lamps on the right of the viewfinder are off.
- ③ The monitor is off.



#### Loading the battery

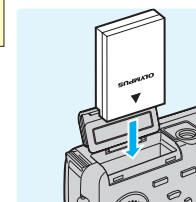
#### 1 Slide the battery compartment cover in the direction of ① and lift up in the direction of ②.



#### 2 Insert the battery into the bottom of the camera as shown.

##### Tips

- If the battery is not correctly inserted, the battery compartment cover will not close.



Continued on next page

Preparations Before operating your camera

15

## Color coding

**text** = 360°'s flagging for manufacturer

= Variation adopted by manufacturer

= Literal adoption by manufacturer

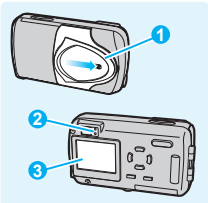
## original manual

000e\_kihonhen.book Page 20 Wednesday, July 16, 2003 4:39 PM

### Before turning the camera on Inserting a card

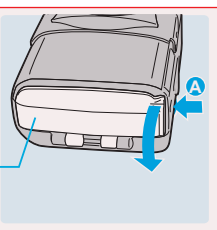
Getting started

- 1** Make sure that
- ① The lens cover is closed.
  - ② The lamps on the right of the viewfinder are off.
  - ③ The monitor is off.



Taking still pictures

- 2** Press **A** and open the connector cover in the direction indicated by the arrow.

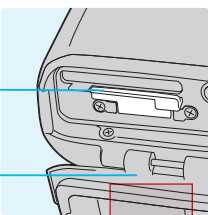


Connector cover

Viewing still pictures

Transferring pictures to a computer

- 3** Open the card cover by pulling the card cover catch towards you.



Card cover

Card cover catch

Printing

Troubleshooting

20

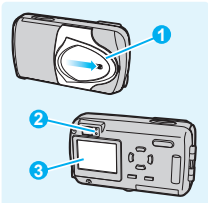
## 360°'s suggested revisions

000e\_kihonhen.book Page 20 Wednesday, July 16, 2003 4:39 PM

### Before turning the camera on Inserting a card

Getting started

- 1** Make sure that
- ① The lens cover is closed.
  - ② The lamps on the right of the viewfinder are off.
  - ③ The monitor is off.

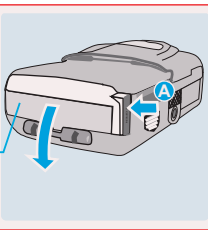


Taking still pictures

- Tips**
- Pressing **ON** turns monitor on/ off.

#### REVISED "Tips"

- 2** Press down firmly at the point indicated by the arrow labeled **A**. While pressing, down pull connector cover open.



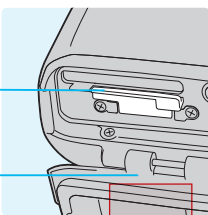
Connector cover

Viewing still pictures

Transferring pictures to a computer

#### REVISED Diagram & Text

- 3** Open the brown colored picture card cover. Use fingertip to pull the card cover catch towards you.



Picture card cover

Picture card cover catch

Printing

Troubleshooting

20

#### REVISED Text & Captions

(Also, suggest adjusting diagram to match 'Step 2' perspective.)

## MANUFACTURER revised manual

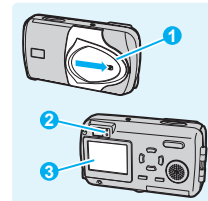
000e\_kihonhen.book Page 18 Tuesday, February 10, 2004 2:30 PM

### Inserting and removing the picture card

This camera stores image data on an xD-Picture Card. No pictures can be taken unless a card has been inserted in the camera.

Make sure that

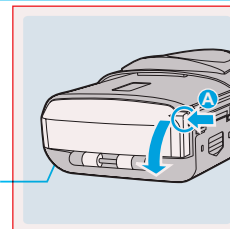
- ① The lens barrier is closed.
- ② The lamps on the right of the viewfinder are off.
- ③ The monitor is off.



Preparations Before operating your camera

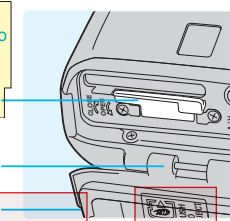
#### Inserting the card

- 1** Press down firmly at the point indicated by the arrow labeled **A**. While pressing, pull connector cover open.



Connector cover

- 2** Open the brown colored picture card cover. Use your fingertips to pull the picture card cover catch towards you.



Picture card cover

Card cover catch

Connector cover

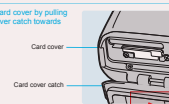
### 360°'s Product Radar commentary

#### DIAGRAMS --

- o Consumers were regularly observed to be rotating and flipping the camera repeatedly, as they attempted to orient the camera to the diagrams they were following. Preferable to the partial diagrams frequently used would be diagrams that include the whole camera, or large sections of the camera showing distinct landmarks, with key areas enlarged and detailed. This is especially true when an item's location is not standard, as say is a battery compartment at the bottom of a device. See Illustration: #4.

Illustration: #4

- 3** Open the card cover by pulling the card cover catch towards you.



Card cover

Card cover catch

20

## Color coding

**text** = 360°'s flagging for manufacturer

**□** = Variation adopted by manufacturer

## original manual

000e\_kihonhen.book Page 33 Wednesday, July 16, 2003 4:39 PM

### Shooting mode Getting ready to shoot

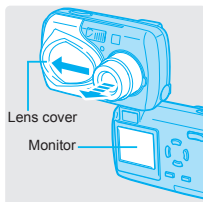
Select a shooting mode and get ready to take pictures.

**1** Open the lens cover fully to turn on the camera.

The lens extends and the monitor turns on.

#### Tips

- If the lens fails to extend, the lens cover is not completely open.

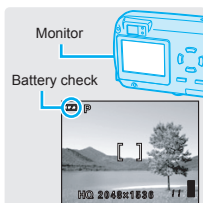


Getting started

Taking still pictures

**2** Check the following on the monitor.

- Is there enough power left in the battery (☺ is displayed in green)?
- Is an error message displayed?
- Is the subject displayed on the monitor?



Viewing still pictures

Transferring pictures to a computer

Printing

Troubleshooting

#### Battery check

The battery check indication changes as follows.

☺ Lights (Green) Pictures can be taken.

☹ Lights (Red) The battery is running low. Replace with a charged battery or charge the battery.

Monitor turns off  
☹ Green lamp and orange lamp blink The battery is exhausted. Replace with a charged battery or charge the battery.

33

## 360°'s suggested revisions

000e\_kihonhen.book Page 33 Wednesday, July 16, 2003 4:39 PM

### Shooting mode Getting ready to shoot

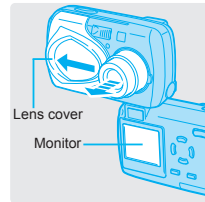
Select a shooting mode and get ready to take pictures.

**1** Open the lens cover fully to turn on the camera.

The lens extends and the monitor turns on.

#### Tips

- If the lens fails to extend, the lens cover is not completely open.



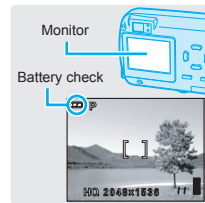
Getting started

Taking still pictures

**2** Check the following on the monitor.

- Is there enough power left in the battery (☺ is displayed in green)?  
The battery indicator only appears for the first 10 seconds after turning on the camera, unless the battery is low or exhausted.
- Is an error message displayed?
- Is the subject displayed on the monitor?

REVISED Text



Viewing still pictures

Transferring pictures to a computer

Printing

Troubleshooting

#### Battery check

The battery check indication changes as follows.

☺ Lights (Green) Pictures can be taken.

☹ Lights (Red) The battery is running low. Replace with a charged battery or charge the battery.

Monitor turns off  
☹ Green lamp and orange lamp blink The battery is exhausted. Replace with a charged battery or charge the battery.

33

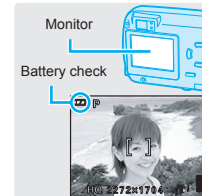
## MANUFACTURER revised manual

000e\_kihonhen.book Page 30 Tuesday, February 10, 2004 2:30 PM

Taking still pictures

**2** Confirm on the monitor that the battery check indication is ☺ (green).

The battery check indication only appears for the first 10 seconds after turning on the camera.



#### • Battery check

The battery check indication changes as follows.

☺ Lights (Green) Pictures can be taken.

☹ Lights (Red) The battery is running low. Replace with a charged battery or charge the battery.

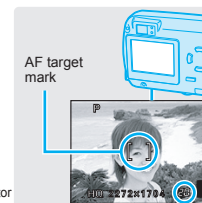
Monitor turns off  
☹ Green lamp and orange lamp blink The battery is exhausted. Replace with a charged battery or charge the battery.

**3** Place the AF target mark on the subject.

The number of remaining pictures is displayed on the monitor.

#### Tips

- If the monitor is hard to see:
  - Bright light, such as direct sunlight, may cause vertical lines to appear on the monitor screen. In this case, use the viewfinder.
  - When you point the camera lens toward a bright subject, smears (lines like beams of light) may appear on the image in the monitor. This does not affect recorded pictures.



360°'s Product Radar commentary

Side tab navigation, though attractively presented and seemingly useful—it was not observed to be used by a single tested consumer.

## Color coding

**text** = 360°'s flagging for manufacturer

= Variation adopted by manufacturer

= Literal adoption by manufacturer

## original manual

000e\_kihonhen.book Page 38 Wednesday, July 16, 2003 4:39 PM

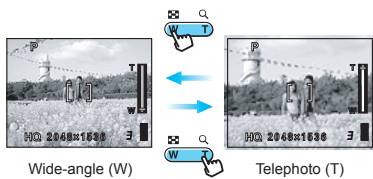
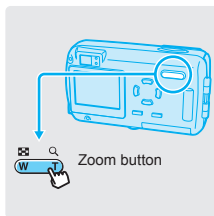
### Shooting Using the zoom

Using the zoom lets you change the scope and composition of the picture you are taking.

1 Press the zoom button.

Press the T side of the zoom button to zoom in on a distant object. (Telephoto)

Press the W side of the zoom button to zoom out and obtain a broader view. (Wide-angle)



## 360°'s suggested revisions

000e\_kihonhen.book Page 38 Wednesday, July 16, 2003 4:39 PM

### Shooting Using the zoom

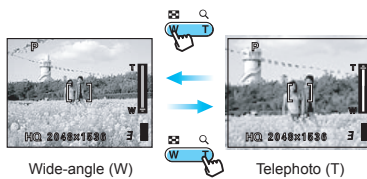
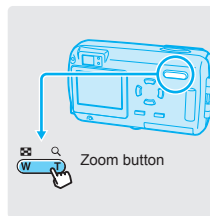
Using the zoom lets you change the scope and composition of the picture you are taking.

1 Press the zoom button.

Press and hold the T side of the zoom button to zoom in on a distant object. (Telephoto)

Press and hold the W side of the zoom button to zoom out and obtain a broader view. (Wide-angle)

**REVISED Text**



## MANUFACTURER revised manual

000e\_kihonhen.book Page 35 Tuesday, February 10, 2004 2:30 PM

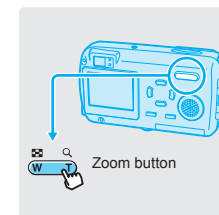
### Using the zoom

This camera can shoot at 3× magnification. Press the zoom button to set shooting range and composition.

Press the zoom button in shooting mode.

Press and hold the T side of the zoom button to zoom in on a distant object. (Telephoto)

Press and hold the W side of the zoom button to zoom out and obtain a broader view. (Wide-angle)



## Color coding

= Variation adopted by manufacturer

= Literal adoption by manufacturer

# original manual

000e\_kihonhen.book Page 49 Wednesday, July 16, 2003 4:39 PM

Connecting to a computer

## Connecting the camera to the computer

The following describes how to use the provided USB cable to connect the camera to the computer. Users running Windows 98/98SE need to install the USB driver before connecting the camera to the computer.

"Installing the USB driver" (P.47)

### Tips

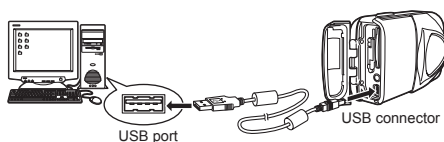
- You are recommended to use the AC adapter when connecting the camera to the computer.
- If you are using batteries, make sure that there is sufficient remaining battery power.

### Caution

- A USB hub cannot be used.

**1** Turn the computer on. Make sure that the camera is off (the lens cover should be closed and the monitor turned off).

**2** Connect one end of the USB cable to the USB port on the computer.  
Connect the other end of the USB cable to the USB connector on the camera.



### Tips

- The camera turns on automatically and the green lamp next to the viewfinder lights.
- The required software installs automatically, so wait until the display disappears before operating the camera.

Getting started

Taking still pictures

Viewing still pictures

Transferring pictures to a

Printing

Troubleshooting

## 360°'s Product Radar commentary

"The required software installs automatically, so wait until the display [what display] disappears before operating the camera." "You are recommended to use the [MUST ADD "OPTIONAL"] AC adapter when connecting the camera to the computer."

t10\_1\_19s\_missing\_adapter.mp3

t11\_4\_12s\_is\_it\_usb\_the\_card\_1\_or\_both\_i-m\_not\_sure.mp3

Many times users are fiddling with PC, etc. during the few seconds it takes the USB driver to load. T11, etc. Further, the mention of the **AC adapter does not state that it's optional**—it is not included in the box.

t9\_4\_32s\_i\_don-t\_know\_what\_display\_they\_are\_talking\_about.mp3

# MANUFACTURER revised manual

000e\_kihonhen.book Page 48 Tuesday, February 10, 2004 2:30 PM

## Connecting the camera to the computer

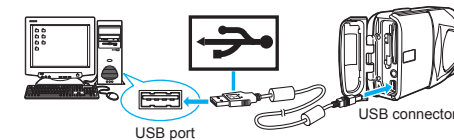
Use the provided USB cable to connect the camera to the computer. Users running Windows 98/98SE need to install the USB driver before connecting the camera to the computer.

"Installing the USB driver" (P.46)

**1** Turn the computer on. Make sure that the camera is off (the lens barrier should be closed and the monitor turned off).

**2** Connect one end of the USB cable to the USB port on the computer.  
Connect the other end of the USB cable to the USB connector on the camera.

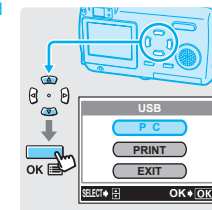
The camera turns on automatically and the green lamp next to the viewfinder lights.



### Tips

- The first time when the camera is connected to your computer, the computer automatically installs the software to recognize the camera. What until recognition is completed.

**3** Press or to select PC and press the OK button.



Windows

Creating and sharing images using a computer

## Color coding

**text** = 360's flagging for manufacturer

= Variation adopted by manufacturer




## original manual

000e\_kihonhen.book Page 46 Wednesday, July 16, 2003 4:39 PM

### Identifying the OS (for the first time only) Determining how to connect the camera to the computer

Getting started

Select the method for connecting the camera to the computer.

- Using the provided USB cable to connect the camera to the computer.  
 "Connecting to a computer" (P.47)
- Using the optional computer Card adapter (MAPC-10) to insert the card into the computer.  
 For details, refer to the instruction manual of the computer Card adapter.
- Using the optional USB reader/writer (MAUSB-10) to connect the card to the computer.  
 For details, refer to the instruction manual of the USB reader/writer.


Viewing still pictures

Transferring pictures to a computer

	1 USB cable	2 computer Card adapter	3 USB reader/writer
Windows Me/2000/XP			
Windows 98/98SE			
Windows NT4.0	-	-	-
Windows 95	-	-	-
Macintosh 9.0 to 9.2, 10.1			
Macintosh 8.6 or lower			

:Available  
-: Not available

#### Tips

- See the Olympus Web site for details about the optional computer Card adapter and USB reader/writer.  <http://www.olympus.com>

Printing

Troubleshooting

46

## 360's suggested revisions




000e\_kihonhen.book Page 46 Wednesday, July 16, 2003 4:39 PM

### REVISED Banner Text

### Identifying your computer's Operating System (OS) -- for first time use only -- Determining how to connect the camera to the computer

Getting started

Select the method for connecting the camera to the computer.

- Using the provided USB cable to connect the camera to the computer.  
 "Connecting to a computer" (P.47)
- Using the optional computer Card adapter (MAPC-10) to insert the card into the computer.  
 For details, refer to the instruction manual of the computer Card adapter.
- Using the optional USB reader/writer (MAUSB-10) to connect the card to the computer.  
 For details, refer to the instruction manual of the USB reader/writer.

Viewing still pictures


Transferring pictures to a computer

#### REVISED Table

	1 USB cable	2 Optional Computer Card adapter	3 Optional USB reader/writer
Windows Me/2000/XP			
Windows 98/98SE			
Windows NT4.0	-	-	-
Windows 95	-	-	-
Macintosh 9.0 to 9.2, 10.1			
Macintosh 8.6 or lower			

:Available  
-: Not available

#### Tips

- See the Olympus Web site for details about the optional computer Card adapter and USB reader/writer.  <http://www.olympus.com>

Printing

Troubleshooting





46

## MANUFACTURER revised manual

000e\_kihonhen.book Page 45 Tuesday, February 10, 2004 2:30 PM


### Determining how to connect the camera to a computer

Select one of the following three methods for connecting the camera to the computer.

- Using the provided USB cable to connect the camera to your computer.  
 "Windows" (P.48)  
 For Macintosh users, see the Reference Manual P.170 (CAMEDIA Master CD-ROM)
- Inserting and using the optional computer card adapter (such as the Olympus MAPC-10) in your computer.  For details, refer to the instruction manual of the computer Card adapter.
- Inserting and using the optional USB card reader/writer (such as the Olympus MAUSB-10) to connect to your computer.  For details, refer to the instruction manual of the USB reader/writer.

	1 USB cable	2 Computer Card adapter (sold separately)	3 USB reader/writer (sold separately)
Windows Me/2000/XP	✓	✓	✓
Windows 98/98SE	✓	✓	✓
Windows NT 4.0	-	-	-
Windows 95	-	✓	-
Macintosh 9.0 to 9.2, 10.1 to 10.3	✓	✓	✓
Macintosh 8.6 or lower	-	✓	✓

#### Tips

- See the Olympus Web site for details about the optional Card adapter and USB reader/writer.  <http://www.olympus.com>

Before using your computer  
Creating and sharing images using a computer

45



## Color coding

= Variation adopted by manufacturer

## original manual

000e\_kihonhen.book Page 80 Wednesday, July 16, 2003 4:39 PM

When the camera is not recognized by the computer

Getting started

**3** Click the "Hardware" tab in the "System Properties" window.

**4** Click "Device Manager".

Taking still pictures

**5** Check the contents of the device manager.

- Disk Drives category: OLYMPUS (camera name)
- Universal Serial Bus controllers category: USB Mass Storage Device
- Storage Volume category: General-Use Volume

viewing still pictures

**6** If the above items are not displayed but there is an item that is only displayed when the camera is connected to the computer, right-click that item, then click "Uninstall" from the shortcut

### Caution

- The device manager contains many devices that are essential for computer operation. Be careful when making any deletions.

Next, click "Update Driver..."

Transferring pictures to a computer

At this time, make sure that the CD-ROM provided with the camera is not inserted in the computer.

Printing

**7** Click the computer name field, then click "Scan for hardware changes".

At this time, make sure that the CD-ROM provided with the camera is not inserted in the computer.

Troubleshooting

**8** Check the contents of the device manager again.

If "OLYMPUS (camera name)", "USB Mass Storage Device", and "General-Use Volume" are displayed, check that the "Removable Disk" icon is displayed in "My Computer" and the camera has been correctly identified by your computer.

### 360°'s Product Radar commentary

**p80** Suggest the wording, "Check your PC's device manager for devices with an exclamation point (!) on a yellow circle. Remove any such devices, then follow step 4 above."

However, this still assumes the reader is an experienced computer user.

### 360°'s Product Radar commentary

\* A more thorough troubleshooting section is strongly recommended. Several consumers sought out the section, but none of them had any luck in finding answers to their questions there. Several checked for "no Card" error clues, and t12 [Tester 12] was wondering why the camera had shutoff (Answer: post 3-minutes of non-operation induced the "sleep mode"). Without further help, via the Troubleshooting section, the "no card" consumers continued to pull their hair out, and t12 got up very carefully, thinking that the blank screen was a short or some other malfunction that he was going to avoid by moving with great caution.

## MANUFACTURER revised manual

When the camera is not recognized by the computer

**2** Click "Performance and Maintenance", then Double click "System".

**3** Click the "Hardware" tab in the "System Properties" window and then click "Device Manager".

**4** If the camera is recognized by the computer, the following items are displayed in the device manager.

- Disk Drives category: OLYMPUS (camera name)
- Universal Serial Bus controllers category: USB Mass Storage Device
- Storage Volume category: General-Use Volume

**5** If the above items are not displayed but there is an item with an exclamation point (!) that is only displayed when the camera is connected to the computer, right click that item, then click "Uninstall" from the shortcut menu.

### Caution

- The device manager contains many devices that are essential for computer operation. Be careful when making any deletions.

Next, click "Update Driver..."

At this time, make sure that the CD-ROM provided with the camera is not inserted in the computer.

**9** Troubleshooting

**6** Click the computer name field, then click "Scan for hardware changes".

At this time, make sure that the CD-ROM provided with the camera is not inserted in the computer.

**7** Check the contents of the device manager again.

If "OLYMPUS (camera name)", "USB Mass Storage Device", and "General-Use Volume" are displayed, check that the "Removable Disk" icon is displayed in "My Computer" and the camera has been correctly identified by your computer.

Troubleshooting section increased from the tested 4-pages to a revised 9-pages.